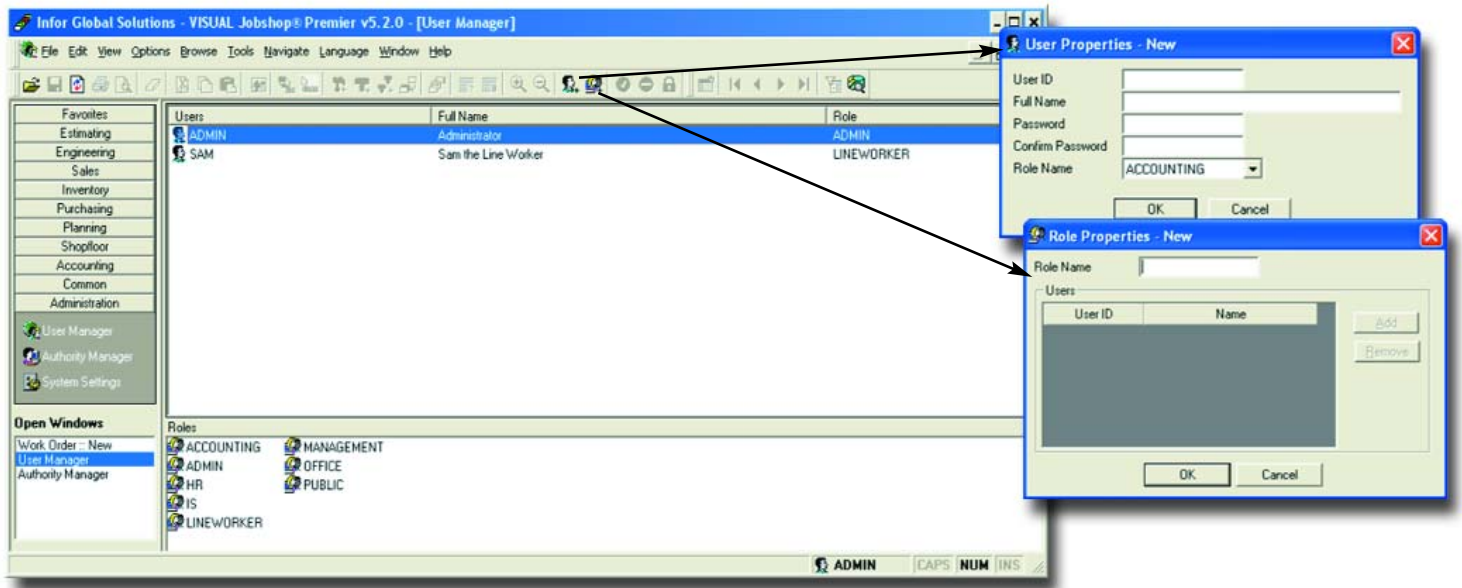
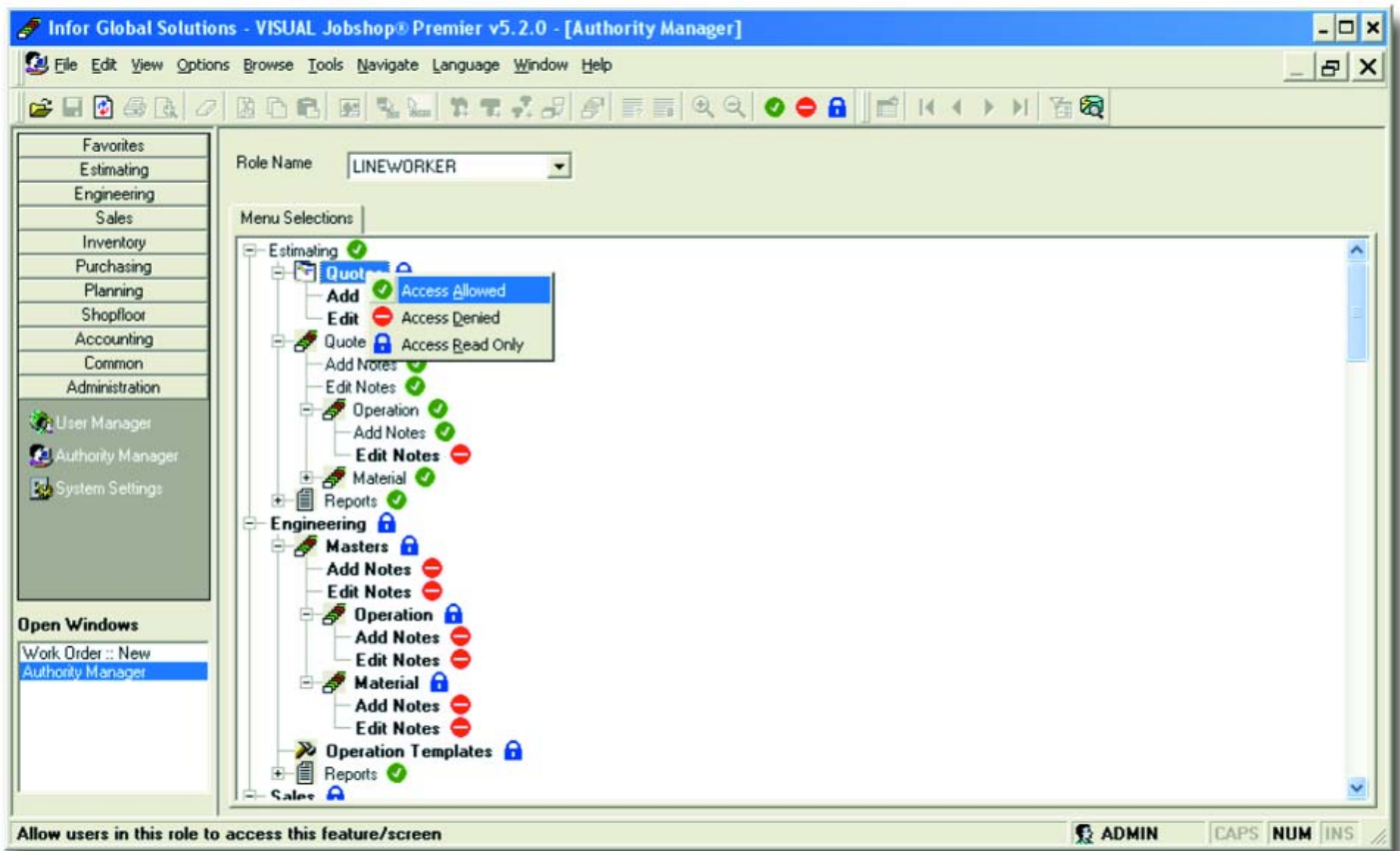


USER MANAGER AND AUTHORITY CONTROL

Use the User Manager to add as many users and roles as you need. Once the roles have been created add your users to specific roles.



Using the authority manager you can define for what functionality access is allowed, denied, or read only based on the specified roles.



With a few mouse clicks you can choose a role and setup your authorities for that role by expanding the tree control and defining access at each individual level. You can also define whole groups at a time by setting the upper level object's authority access and this grants the same authority to all objects in that branch.