

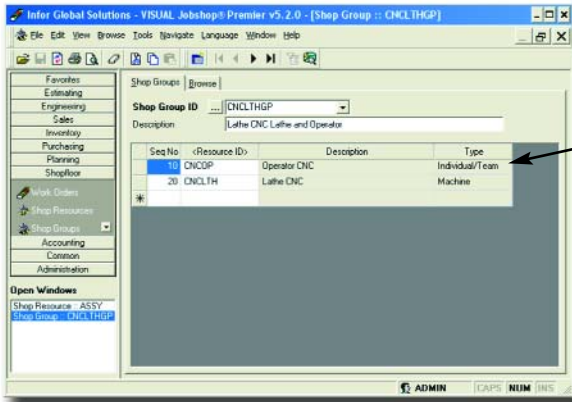
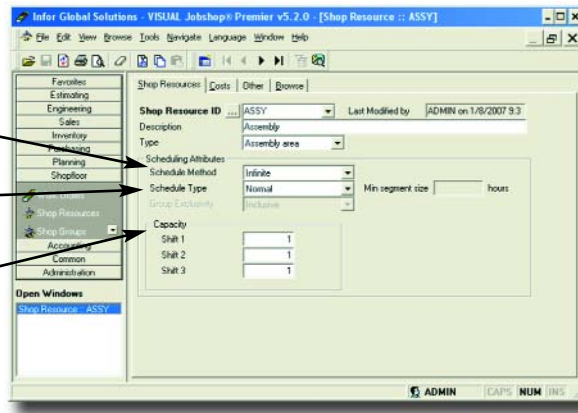
# SCHEDULING

Infor VISUAL Jobshop's scheduler can plan your shop floor and material requirement dates based on work order want dates and global rank.

Define your Scheduling Method as either "Infinite" or "Finite".

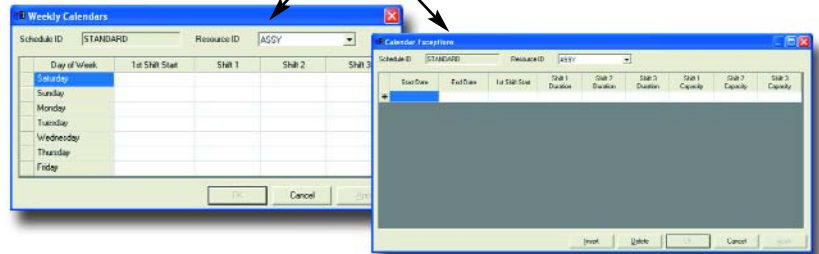
Set your scheduling type to "Normal" or "Discontinuous".

Assign the current resource the appropriate capacity for each shift.

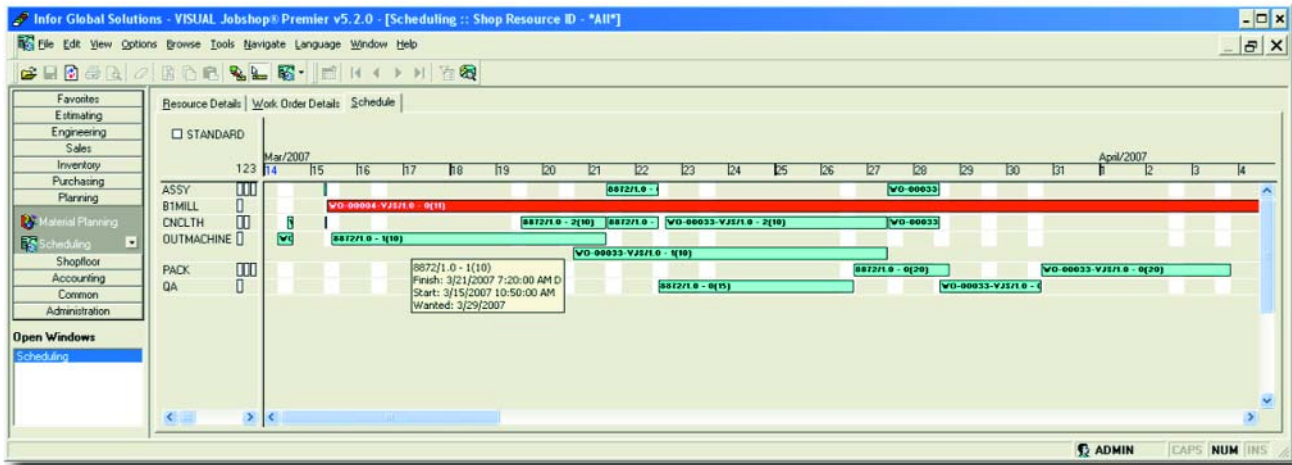


Create resource groups that are either "Inclusive" or "Exclusive" by simply adding existing resources to the group.

Create individual calendars and calendar exceptions for individual shop resources.



Configure individual work orders to be either forward or backward scheduled.



View the schedule for all resources, an individual resource, a predefined group of resources called a shop view, or for an individual work order. Instantly see which work orders will complete on time and which ones need attention.