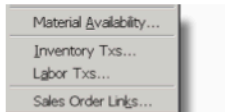
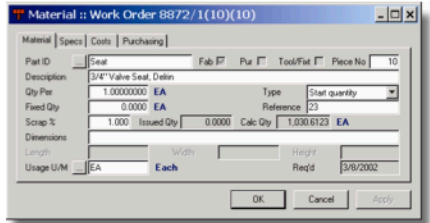


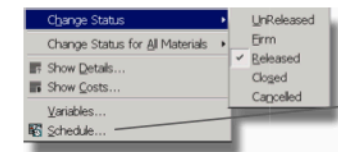
# SHOP FLOOR CONTROL

Integrated, real-time information and rich functionality from Infor VISUAL Jobshop Premier makes it easy for you to manage shop floor operations, review critical reports, and improve productivity.

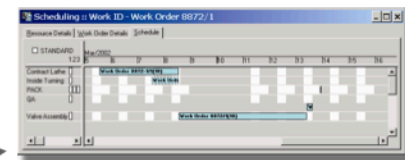
Click on any of the red cards to view detailed information about the components of your work order.



Access data quickly about material, inventory, labor, and sales orders.



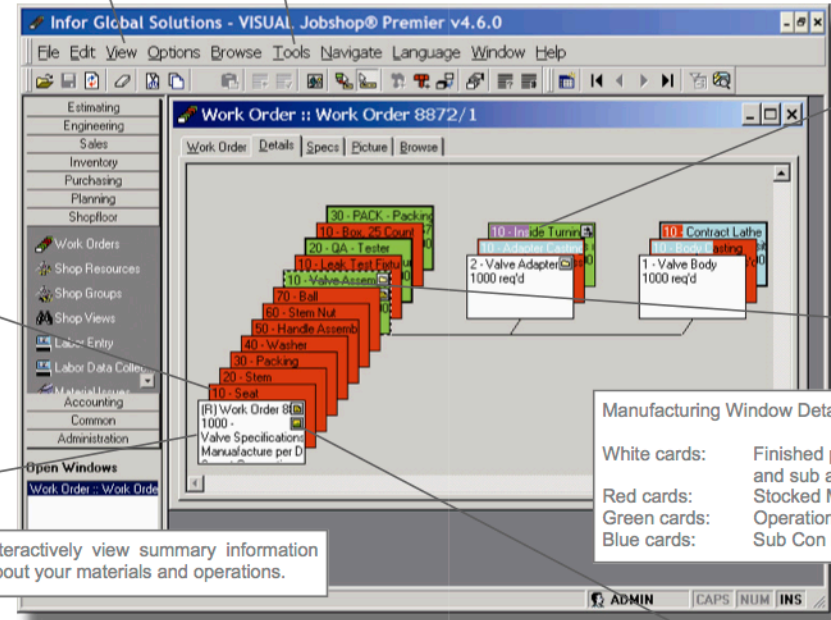
Schedule work orders directly from the Tools menu.



Immediate access to accurate data provides a competitive advantage in today's marketplace, allowing you to make knowledgeable decisions and increase profits.

Right click on any card to edit details, change the status, and access summarized information about your operations.

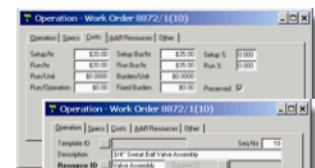
Create and view "combined" bill of material and routing structures using drag-and-drop



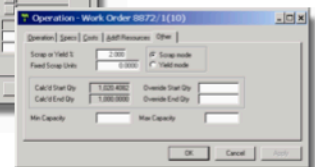
**Manufacturing Window Details:**  
 White cards: Finished products and sub assemblies  
 Red cards: Stocked Materials  
 Green cards: Operations  
 Blue cards: Sub Con Process

Interactively view summary information about your materials and operations.

View the percentage of completion of any job instantly using the graphical % complete bars.



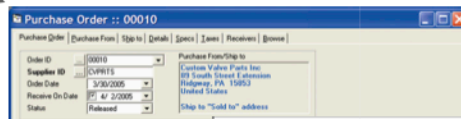
Drill down from any operation card to access information about costs, timing, and scrap rates.



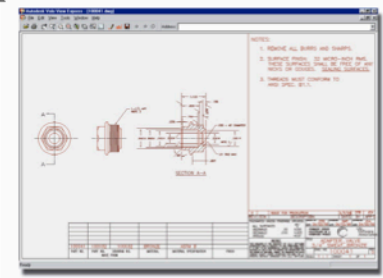
With Infor VISUAL Jobshop Premier's state-of-the-art Manufacturing Window®, you can view every angle of your production activity, from sales order release to work order closing.

Cost View	Quantity	Estimated	Actual	Variance	Reserved	Estimated Total	Actual Total	Variance Total
10 - Valve Assembly	1000.00	1113.75	0.00	1113.75	1113.75	20.25	0.00	20.25
20 - Stem	1000.00	520.00	0.00	520.00	520.00	0.00	0.00	0.00
30 - Packing	1000.00	150.00	0.00	150.00	150.00	0.00	0.00	0.00
40 - Washer	1000.00	20.00	0.00	20.00	20.00	0.00	0.00	0.00
60 - Handle Assembly	1000.00	450.00	0.00	450.00	450.00	0.00	0.00	0.00
10 - Seal	1000.00	75.00	0.00	75.00	75.00	0.00	0.00	0.00
1 - Valve Body	1000.00	800.00	366.00	434.00	784.00	3.00	0.00	3.00
2 - Valve Adapter	1000.00	450.00	169.00	281.00	440.00	1.00	0.00	1.00
10 - Body Casting	1000.00	390.00	190.00	200.00	354.00	0.00	0.00	0.00
10 - Valve Casting	1000.00	90.00	107.00	17.00	96.00	0.00	0.00	0.00
20 - GA - Gaskets	1000.00	427.50	217.00	210.50	590.00	0.00	0.00	0.00
10 - Adapter Casting	1000.00	300.00	400.00	100.00	400.00	0.00	0.00	0.00
10 - Lock - Test Fixture	1000.00	5.00	5.00	0.00	5.00	0.00	0.00	0.00
30 - PACK - Packing Operation	1000.00	20.00	0.00	20.00	20.00	0.00	0.00	0.00
10 - Box - 25 Count	40.00	50.00	0.00	50.00	50.00	0.00	0.00	0.00

Click on any column to see more specific information.



Line No	Description	Qty	Unit Price	Total Price
1	Open Part order	8,371	0.00	0.00
2	Open Part order	4,240	0.00	0.00
3	Open Part order	3,723	0.00	0.00
4	Open Part order	3,224	0.00	0.00
5	Open Part order	3,275	0.00	0.00
6	Open Part order	1,051	0.00	0.00



Click the icon to view any file that has an associated application.

Track and analyze costs easily with Jobshop. Quickly compare estimated, actual, and projected costs for completed and active jobs.